



IMAGEMAKERS

corporate wear



INTRODUCING

ADDITIONAL
10 NEW
STYLES
&
14 NEW
COLOURS



the
CARMEN
blouse

Flirty and feminine,
with $\frac{3}{4}$ sleeves
and a tie
bow collar, in Blush.

*Available in
NEW colours
and prints!*





EMERALD



BLACK & WHITE POLKA



RIBBON RED



CRUISE



CORAL



STARBURST



BOSTON



CREAM



PURPLE



TEXAS



SAPPHIRE



MELON



the
ZOLA
blouse

Sassy sleeveless blouse with a longer back and a fashionable collar, in Melon.

*Available in
NEW colours
and prints!*





BLUSH



EMERALD



STARBURST



PURPLE



SAPPHIRE



RIBBON RED



BOSTON



CORAL



TEXAS



CREAM



BLACK & WHITE POLKA



CRUISE



the
EVELYN
blouse

For a more casual look, our Evelyn blouse sports a longer back, 2 pockets and adjustable sleeves with tabs, in Cruise.

*Available in
NEW colours
and prints!*





BLACK & WHITE POLKA



EMERALD



CREAM



BOSTON



SAPPHIRE



MELON



STARBURST



RIBBON RED



BLUSH



TEXAS



CORAL

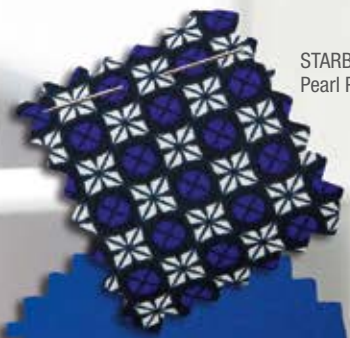


PURPLE


NEW

STAR STRUCK

Diamond black suiting with dazzling Sapphire, Starburst Print and White Pearl Polyester blouses.



STARBURST
Pearl Polyester



SAPPHIRE
Pearl Polyester



GREEK NAVY SUITING
French Polyester

FJ76 JEMMA JACKET
Greek Navy Suiting (sizes 28-48)
BB143 ZOLA BLOUSE
Sapphire Pearl Polyester (sizes 26-48)
FS22 SHANI SKIRT
Greek Navy Suiting (sizes 28-54)



BB139 BENITA BLOUSE
Pearl White Polyester (sizes 28-48)
FD12 ROMY DRESS
Greek Navy Suiting (sizes 26-44)



WE OFFER
CONTINUITY
YOU CAN
REPEAT AN
ORDER WITH
CONFIDENCE
OR RE-ORDER
WHEN YOU
HAVE A NEW
STAFF MEMBER



BB141 CAITLIN BLOUSE
Pearl White Polyester (sizes 30-54)
FP28 CHRISTINE SLAX
Greek Navy Suiting (sizes 28-48)



BB139 BENITA BLOUSE
Starburst Print Polyester (sizes 28-48)
FP29 PARIS SLAX
Greek Navy Suiting (sizes 28-48)

BB140 BROOK BLOUSE
Sapphire Pearl Polyester (sizes 28-54)
FS22 SHANI SKIRT
Greek Navy Suiting (sizes 28-54)



BB142 EVELYN BLOUSE
Starburst Print Polyester
(sizes 28-54)

FJ51 SAM WAISTCOAT
Greek Navy Suiting (sizes 26-48)
BB142 EVELYN BLOUSE
Sapphire Pearl Polyester (sizes 28-54)
FP28 CHRISTINE SLAX
Greek Navy Suiting (sizes 28-48)

FJ75 ELNA JACKET
Greek Navy Suiting (sizes 30-48)
BB140 BROOK BLOUSE
Starburst Print Polyester (sizes 28-54)
FP28 CHRISTINE SLAX
Greek Navy Suiting (sizes 28-48)

NEW

NEUTRAL GROUND

Diamond black suiting with graphic Texas Print offset with delicious Cream Pearl Polyester blouses.



DIAMOND BLACK SUITING
French Polyester

CREAM
Pearl Polyester

TEXAS
Print Polyester

FJ51 SAM WAISTCOAT
Diamond Black Suiting (sizes 26-48)
BB140 BROOK BLOUSE
Cream Pearl Polyester (sizes 28-54)
FP29 PARIS SLAX
Diamond Black Suiting (sizes 28-48)



FJ76 JEMMA JACKET
Diamond Black Suiting (sizes 28-48)
BB139 BENITA BLOUSE
Texas Print Polyester (sizes 28-48)
FP28 CHRISTINE SLAX
Diamond Black Suiting (sizes 28-48)

BB143 ZOLA BLOUSE
Cream Pearl Polyester
(sizes 26-48)
FP29 PARIS SLAX
Diamond Black Suiting
(sizes 28-48)



FJ75 ELNA JACKET
Diamond Black Suiting
(sizes 30-48)

BB141 CAITLIN BLOUSE
Cream Pearl Polyester
(sizes 30-54)

FS22 SHANI SKIRT
Diamond Black Suiting
(sizes 28-54)

E02N NECK SCARF
Texas Print Polyester

FD12 ROMY DRESS
Diamond Black Suiting
(sizes 26-44)



BB142 EVELYN BLOUSE
Texas Print Polyester (sizes 28-54)
FP28 CHRISTINE SLAX
Diamond Black Suiting (sizes 28-48)



NEW

DEEP PURPLE

Pack a punch with Purple and Boston Print Polyester blouses matched with Slate suiting.



BOSTON
Print Polyester



PURPLE
Pearl Polyester



SLATE SUITING
Roman Polyester

FJ76 JEMMA JACKET
Slate Suiting (sizes 28-48)
FD12 ROMY DRESS
Slate Suiting (sizes 26-44)



BB143 ZOLA BLOUSE Boston Print Polyester (sizes 26-48)
FS22 SHANI SKIRT Slate Suiting (sizes 28-54)

FJ61 CELINE JACKET Slate Suiting (sizes 28-48)
BB143 ZOLA BLOUSE Purple Polyester (sizes 26-48)
FP28 CHRISTINE SLAX Slate Suiting (sizes 28-48)



BB142 EVELYN BLOUSE
Purple Polyester (sizes 28-54)
FS22 SHANI SKIRT
Slate Suiting (sizes 28-54)

BB142 EVELYN BLOUSE
Smokey Grey Polyester (sizes 28-54)
FP29 PARIS SLAX
Slate Suiting (sizes 28-48)



MAKE YOUR
WARDROBE
WORK AS
HARD AS
YOU DO

FJ51 SAM WAISTCOAT
Slate Suiting (sizes 26-48)
BB142 EVELYN BLOUSE
Boston Print Polyester (sizes 28-54)
FP28 CHRISTINE SLAX
Slate Suiting (sizes 28-48)

NEW

BEAUTIFUL IN **BLUSH**

Diamond Black suiting
with flirty Melon and
Blush Pearl Polyester
blouses.

BB141 CAITLIN BLOUSE
Blush Polyester (sizes 30-54)
FS22 SHANI SKIRT
Diamond Black Suiting (sizes 28-54)

DIAMOND BLACK SUITING
French Polyester

MELON
Pearl Polyester

BLUSH
Pearl Polyester





FJ76 JEMMA JACKET
Diamond Black Suiting (sizes 28-48)
BB139 BENITA BLOUSE
Blush Polyester (sizes 28-48)
FP28 CHRISTINE SLAX
Diamond Black Suiting (sizes 28-48)

FJ75 ELNA JACKET
Diamond Black Suiting (sizes 30-48)
BB139 BENITA BLOUSE
Melon Polyester (sizes 28-48)
FP28 CHRISTINE SLAX
Diamond Black Suiting (sizes 28-48)



Did you know?

We can design a catalogue with your selected styles and colours to distribute amongst your company and branches.

We can allocate your company's chosen styles and colours to your online account, so you can only order according to the colours selected for your corporate wardrobe.

BB140 BROOK BLOUSE
Melon Polyester (sizes 28-54)
FD12 ROMY DRESS
Diamond Black Suiting (sizes 26-44)



BB143 ZOLA BLOUSE
Blush Polyester (sizes 26-48)
FP28 CHRISTINE SLAX
Diamond Black Suiting (sizes 28-48)

BB139 BENITA BLOUSE
Boston Print Polyester (sizes 28-48)
FS22 SHANI SKIRT
Diamond Black Suiting (sizes 28-54)

NEW

CRUISE CONTROL

Greek Navy suiting with
Cruise Print, Mint and
vibrant Emerald Pearl
Polyester blouses.



EMERALD
Pearl Polyester

GREEK NAVY
SUITING
French Polyester

CRUISE
Print Polyester

FJ61 CELINE JACKET
Greek Navy Suiting (sizes 28-48)
BB141 CAITLIN BLOUSE
Emerald Polyester (sizes 30-54)
FP28 CHRISTINE SLAX
Greek Navy Suiting (sizes 28-48)



BB143 ZOLA BLOUSE
Emerald Polyester (sizes 26-48)
FP29 PARIS SLAX
Greek Navy Suiting (sizes 28-48)

BB142 EVELYN BLOUSE
Cruise Print Polyester (sizes 28-54)
FP29 PARIS SLAX
Greek Navy Suiting (sizes 28-48)

NEW

BUSINESS CASUAL

Greek Navy suiting with
Cruise Print, Mint and
Cruise Print Polyester
blouses.



FJ60 NIKKI JACKET
Greek Navy Suiting (sizes 26-48)
BB139 BENITA BLOUSE
Pearl White Polyester (sizes 28-48)
FP29 PARIS SLAX
Greek Navy Suiting (sizes 28-48)

GREEK NAVY
SUITING
French Polyester

CRUISE
Print Polyester

MINT
Pearl Polyester

FJ51 SAM WAISTCOAT
Greek Navy Suiting (sizes 26-48)
BB140 BROOK BLOUSE
Cruise Print Polyester (sizes 28-54)
Greek Navy Suiting (sizes 28-48)
FP28 CHRISTINE SLAX
Greek Navy Suiting (sizes 28-48)

BB140 BROOK BLOUSE
Mint Polyester (sizes 28-54)
FS22 SHANI SKIRT
Greek Navy Suiting (sizes 28-54)



new
JEMMA

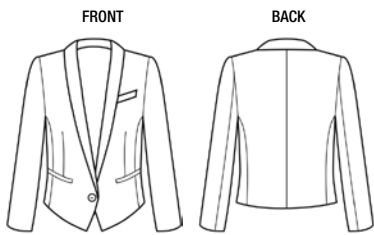


new
ELNA



ZARAH

JACKETS STYLE INFORMATION



Approx. 55cm centre back

FITTED

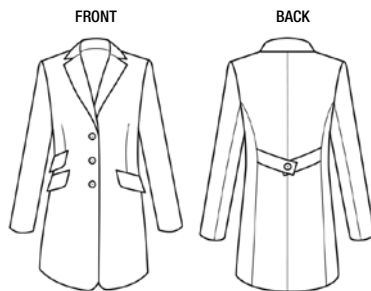
FJ76 JEMMA - Jacket

Long sleeve, 2 Welt pockets short shawl collar jacket, LINED

SIZES 28 - 44

AVAILABLE IN: See swatches right

Optional extra 5cm sleeve length ↓



Approx. 80cm centre back

CLASSIC

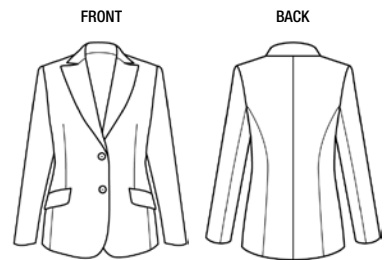
FJ75 ELNA - Jacket

Long sleeve, Coat style jacket, Jet pockets, Back belt, LINED

SIZES 30 - 48

AVAILABLE IN: See swatches right

Optional extra 5cm sleeve length ↓



Approx. 72cm centre back

CLASSIC

FJ54 ZARAH - Jacket

Long sleeve, Hip length with pockets, LINED

SIZES 30 - 54

AVAILABLE IN: See swatches right

Optional extra 5cm sleeve length ↓

EXTRA LENGTH

You can order your jacket sleeves **5cm longer** on selected styles. Look for this symbol ↓

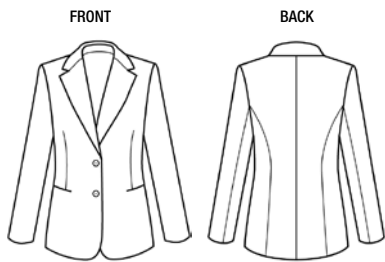
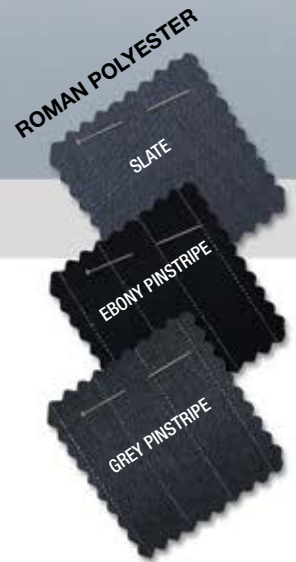
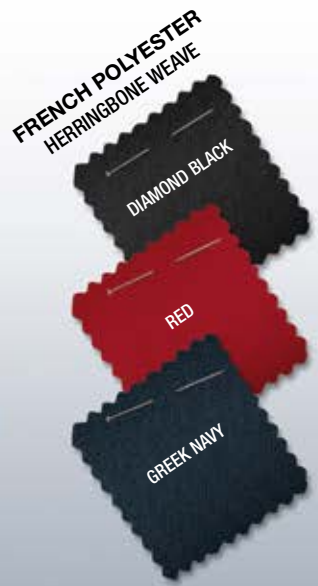
ALL JACKETS ARE AVAILABLE
IN THESE COLOURS



CELINE

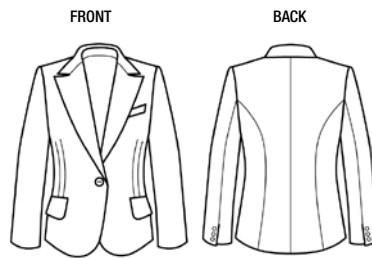


NIKKI



FRONT

BACK



FRONT

BACK

Approx. 67cm centre back

CLASSIC

FJ61 CELINE - Jacket

Long sleeve, Medium length,
Jet pockets, LINED

SIZES 28 - 48

AVAILABLE IN: See swatches right

Optional extra 5cm sleeve length ↓

Approx. 63cm centre back

FITTED

FJ60 NIKKI - Jacket

Long sleeve, Short shaped jacket,
with pockets, LINED

SIZES 26 - 48

AVAILABLE IN: See swatches right

Optional extra 5cm sleeve length ↓



RUTH



GRETA



VICKY

JACKETS STYLE INFORMATION

FRONT BACK



Approx. 57cm centre back

FITTED

FJ65 RUTH - Jacket

Petite, Short sleeve fashion jacket,
Mock pockets, LINED

SIZES 26 - 44

AVAILABLE IN: See swatches right

FRONT BACK



Approx. 63cm centre back

CLASSIC

FJ67 GRETA - Jacket

Short sleeve, Shaped, Medium length,
Jet pockets with flaps, LINED

SIZES 28 - 48

AVAILABLE IN: See swatches right

FRONT BACK



Approx. 68cm centre back

CLASSIC

FJ66 VICKY - Waistcoat

Sleeveless jacket, Jet pockets,
LINED

SIZES 30 - 54

AVAILABLE IN: See swatches right

FRONT BACK



Approx. 51cm centre back

FITTED

FJ51 SAM - Waistcoat

Shaped, Short fashion length
waistcoat, LINED

SIZES 26 - 48

AVAILABLE IN: See swatches right



ALL JACKETS ARE AVAILABLE
IN THESE COLOURS



RINA



ROLENE

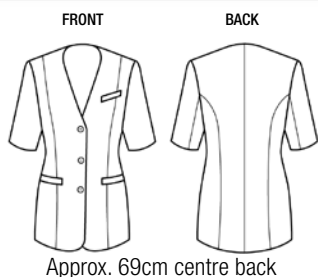
**FRENCH POLYESTER
HERRINGBONE WEAVE**



ROMAN POLYESTER



MARBLE POLYESTER



Approx. 69cm centre back

CLASSIC

FJ63 RINA - Jacket

Short sleeve, Collarless,
Welt pockets, LINED

SIZES 30 - 54

AVAILABLE IN: See swatches right



Approx. 69cm centre back

CLASSIC

FJ64 ROLENE - Jacket

Long sleeve, Collarless,
Welt pockets, LINED

SIZES 30 - 54

AVAILABLE IN: See swatches right

Optional extra 5cm length sleeve ↓



MOLLY

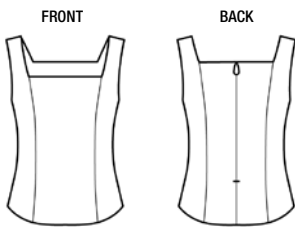


AVA



MEGAN

TOPS STYLE INFORMATION



Approx. 45cm centre back

FITTED

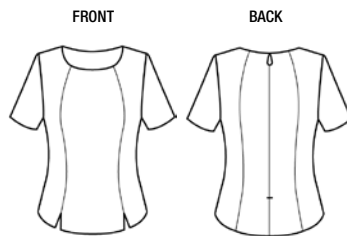
FT20 MOLLY - Camy

Camisole, Square neckline,

UNLINED

SIZES 28 - 48

AVAILABLE IN: See swatches right



Approx. 54cm centre back

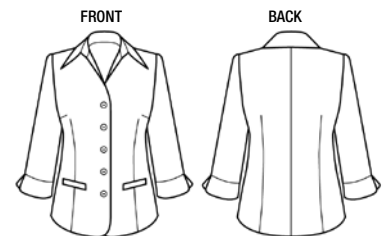
CLASSIC

FT21 AVA - Top

Short sleeve, Round neck, UNLINED

SIZES 28 - 48

AVAILABLE IN: See swatches right



Approx. 61cm centre back

CLASSIC

FT22 MEGAN - Top

3/4 Sleeve top, Mock pockets

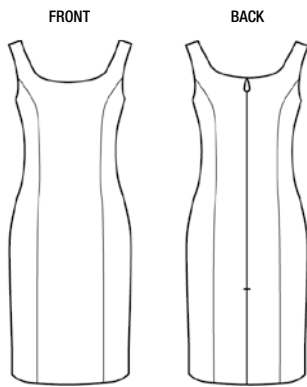
UNLINED

SIZES 30 - 54

AVAILABLE IN: See swatches right

DRESS

STYLE INFORMATION



Approx. 86cm centre back

FITTED

FD12 ROMY - Dress

Panelled dress, LINED

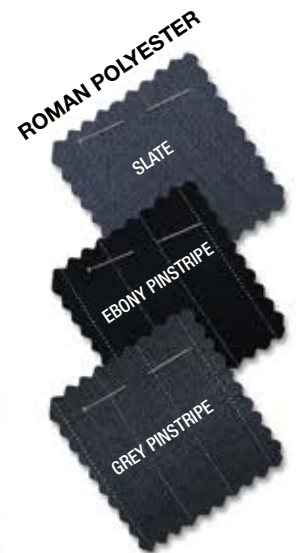
SIZES 26 - 44

AVAILABLE IN: See swatches right



ROMY

ALL TOPS AND DRESSES
ARE AVAILABLE
IN THESE COLOURS





PRISCILLA



CHERIE



HELGA

SLAX STYLE INFORMATION



Approx. 83cm inner leg

CLASSIC

FP17 PRISCILLA - Slax

Slim fit, Slightly dropped waist,

No waistband

SIZES 26 - 54

Optional extra 7cm length leg ↓

AVAILABLE IN:

Swatches shown right



Approx. 83cm inner leg

FITTED

FP22 CHERIE - Slax

Hipster, Waistband detail and back

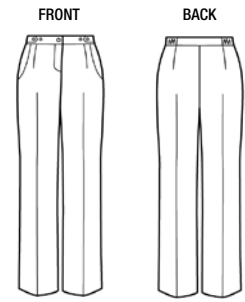
welt pocket detail

SIZES 26 - 48

Optional extra 7cm length leg ↓

AVAILABLE IN:

Swatches shown right



Approx. 81cm inner leg

RELAXED

FP24 HELGA - Slax

Partly elasticated, Adjustable

waistband with pleats and pockets

SIZES 30 - 54

Optional extra 7cm length leg ↓

AVAILABLE IN:

Swatches shown right



DEBBY

CHRISTINE

PARIS



Approx. 83cm inner leg

CLASSIC

FP23 DEBBY - Slax

Wide leg, Turn-up, Back jet pocket detail

SIZES 30 - 48

AVAILABLE IN:

Swatches shown below



Approx. 81cm inner leg

FITTED

FP28 CHRISTINE - SLAX

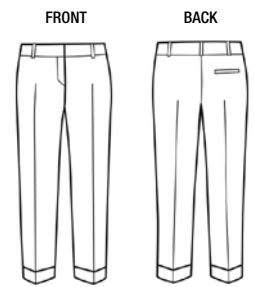
Slightly dropped waist, Long slim leg classic slax

SIZES 28 - 48

Optional extra 7cm length leg ↓

AVAILABLE IN:

Swatches shown below



Approx. 70cm inner leg

FITTED

FP29 PARIS - SLAX

Slightly dropped waist, Slim leg, Ankle length with turn up, Back welt pocket detail

SIZES 28 - 48

AVAILABLE IN:

Swatches shown below





JUSTINE



SHANI

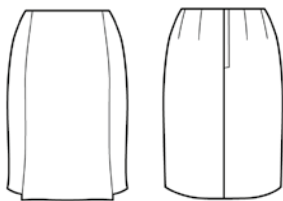


MARINA

SKIRTS STYLE INFORMATION

FRONT

BACK



Approx. 52cm from waist

CLASSIC

FS23 JUSTINE - Skirt

Above the knee, Inverted front pleats, LINED

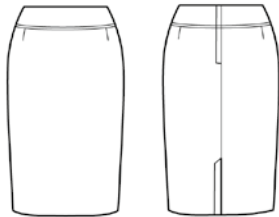
SIZES 26 - 48

AVAILABLE IN:

Swatches shown right

FRONT

BACK



Approx. 60cm from waist

FITTED

FS22 SHANI - Skirt

Classic pencil skirt, Dropped waist, Waistband detail, Back vent, LINED

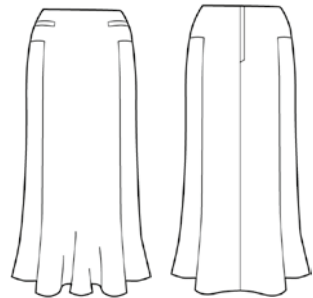
SIZES 28 - 54

AVAILABLE IN:

Swatches shown right

FRONT

BACK



Approx. 90cm from waist

CLASSIC

FS25 MARINA - Long Skirt

Long skirt with flared bottom, Front welt detail

SIZES 28 - 54

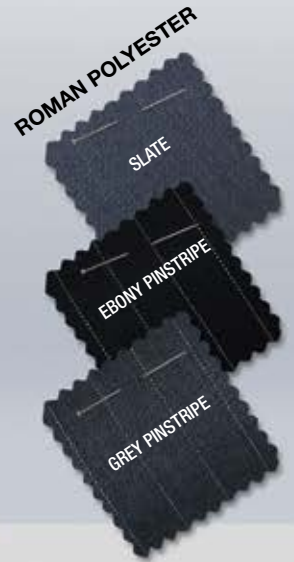
AVAILABLE IN:

Swatches shown right

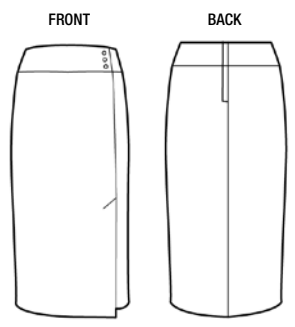


BIBETTE

ALL SKIRTS ARE AVAILABLE
IN THESE COLOURS



im **IMAGEMAKERS®**
corporate wear



Approx. 80cm from waist

CLASSIC

FS24 BIBETTE - Long Skirt

Long skirt with basque detail,
Side front slit, LINED

SIZES 30 - 48

AVAILABLE IN:
Swatches shown right



*Classically designed Bibette with
pretty button detail*

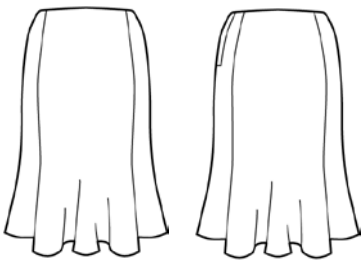


WENDY

SOFT SKIRT STYLE INFORMATION

FRONT

BACK



Approx. 60cm from waist

FITTED

SS25 WENDY - Flair Skirt

Soft shape, Flared fashion skirt, LINED

SIZES 28 - 48

PEARL POLYESTER



JACQUARD SATIN BLOUSE STYLE INFORMATION



CLASSIC

BB94 CARLY - Camy

Camisole with front pleats

SIZES 28 - 48

COLOUR: Opal White, Silver, Ruby Red

FABRIC: Jacquard Satin

FRONT



BACK



Approx. 55cm centre back



CLASSIC

BB93 COLLEEN - Blouse

Cap sleeve, Removable neck-tie blouse,
Fashion blouse

SIZES 26 - 48

COLOUR: Opal White, Silver, Ruby Red

FABRIC: Jacquard Satin

FRONT



BACK



Approx. 60cm centre back



CLASSIC

BB98 JANIE - Blouse

Long sleeve blouse with cuff detail

SIZES 28 - 48

COLOUR: Opal White, Silver, Ruby Red

FABRIC: Jacquard Satin

FRONT



BACK



Approx. 64cm centre back

JACQUARD SATIN



SILVER



OPAL WHITE



RUBY RED





new
ZOLA



new
BENITA



new
BROOK

PEARL POLYESTER BLOUSE STYLE INFORMATION

FRONT

BACK



Approx. 67cm centre back

CLASSIC

BB143 ZOLA - Blouse

Fashion collar sleeveless blouse,
Longer back

SIZES 26 - 48

AVAILABLE IN: See swatches right

ALSO AVAILABLE IN CRUISE

FRONT

BACK



Approx. 64cm centre back

CLASSIC

BB139 BENITA - Blouse

Short sleeve concealed button
stand with pintuck detail

SIZES 28 - 48

AVAILABLE IN: See swatches right

ALSO AVAILABLE IN CRUISE

FRONT

BACK



Approx. 64cm centre back

CLASSIC

BB140 BROOK - Blouse

3/4 Sleeve, Fashionable
round collar

SIZES 28 - 54

AVAILABLE IN: See swatches right

ALSO AVAILABLE IN CRUISE



CRUISE

PLEASE NOTE

Our Cruise print is only available in **selected styles**



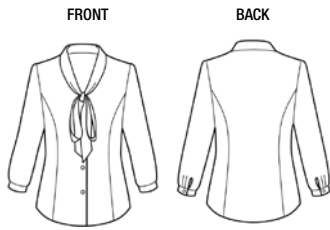
new
CARMEN



new
EVELYN



new
CAITLIN



Approx. 64cm centre back

CLASSIC

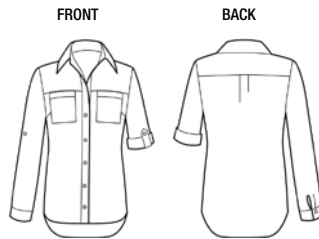
BB144 CARMEN - Blouse

3/4 Sleeve, Fashionable
bow collar

SIZES 26 - 48

AVAILABLE IN: See swatches below

ALSO AVAILABLE IN CRUISE



Approx. 71cm centre back

RELAXED

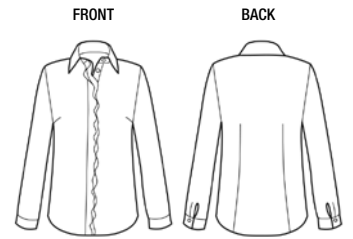
BB142 EVELYN - Blouse

2 Pockets, Longer back,
Adjustable sleeve

SIZES 28 - 54

AVAILABLE IN: See swatches below

ALSO AVAILABLE IN CRUISE



Approx. 66 cm centre back

CLASSIC

BB141 CAITLIN - Blouse

Long sleeve, Double frilled
buttonstand feature

SIZES 30 - 54

AVAILABLE IN: See swatches below

ALSO AVAILABLE IN CRUISE

PEARL POLYESTER COLOURS AND PRINTS





CARLY



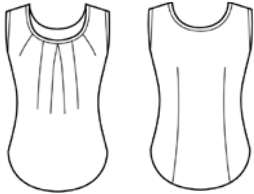
MILDRED



COLLEEN

PEARL POLYESTER BLOUSE STYLE INFORMATION

FRONT BACK



Approx. 55cm centre back

CLASSIC

BB94 CARLY - Camy

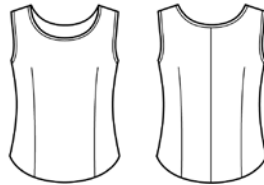
Camisole with front pleats

SIZES 28 - 48

AVAILABLE IN: See swatches right

ALSO AVAILABLE IN CRUISE

FRONT BACK



Approx. 53cm centre back

CLASSIC

BB74 MILDRED - Camy

Camisole, Hip Length

SIZES 30 - 54

AVAILABLE IN: See swatches right

ALSO AVAILABLE IN CRUISE

FRONT BACK



Approx. 60cm centre back

CLASSIC

BB93 COLLEEN - Blouse

Cap sleeve, Removable neck-tie

blouse, Fashion blouse

SIZES 26 - 48

AVAILABLE IN: See swatches right

ALSO AVAILABLE IN CRUISE



CRUISE

PLEASE NOTE

Our Cruise print is only available in **selected styles**



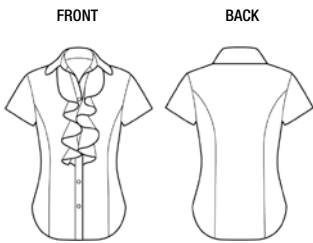
LEILA



PETRA



PAULA



Approx. 62cm centre back

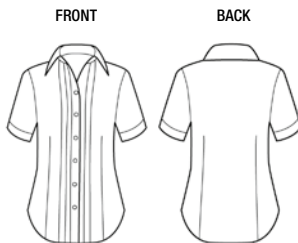
CLASSIC

BB102 LEILA - Blouse

Front frill, Short sleeve blouse

SIZES 28 - 48

AVAILABLE IN: See swatches right



Approx. 62cm centre back

CLASSIC

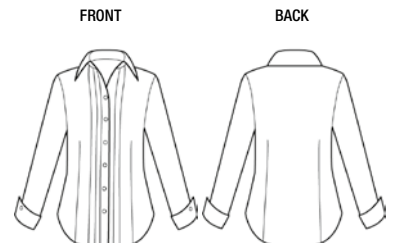
BB95 PETRA - Blouse

Short sleeve blouse, Pintucked front

SIZES 28 - 48

AVAILABLE IN: See swatches below

ALSO AVAILABLE IN CRUISE



Approx. 62cm centre back

CLASSIC

BB96 PAULA - Blouse

Long sleeve blouse, Pintucked front

SIZES 26 - 48

AVAILABLE IN: See swatches below

ALSO AVAILABLE IN CRUISE

PEARL POLYESTER COLOURS AND PRINTS





JENNY

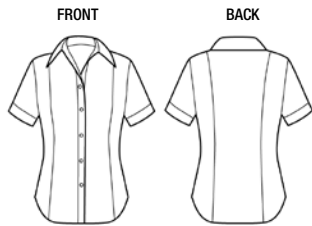


JOLENE



JANIE

PEARL POLYESTER BLOUSE STYLE INFORMATION

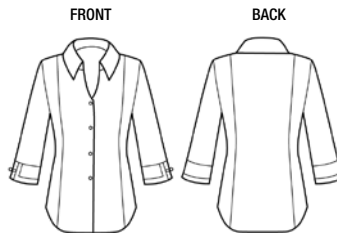


Approx. 64cm centre back

CLASSIC

BB99 JENNY - Blouse
Short sleeve classic blouse
SIZES 26 - 54

AVAILABLE IN: See swatches right

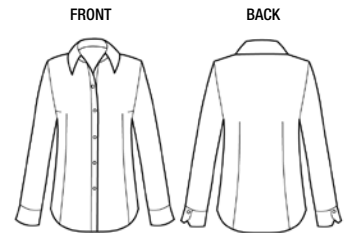


Approx. 64cm centre back

CLASSIC

BB97 JOLENE - Blouse
3/4 Sleeve blouse with cuff detail
SIZES 28 - 54

AVAILABLE IN: See swatches right
ALSO AVAILABLE IN CRUISE



Approx. 64cm centre back

CLASSIC

BB98 JANIE - Blouse
Long Sleeve blouse with cuff detail
SIZES 28 - 48

AVAILABLE IN: See swatches right



E02N NECK - Scarf
One size fits all (142cm x 21cm)

AVAILABLE IN: See swatches right
ALSO AVAILABLE IN CRUISE



CRUISE

PLEASE NOTE
Our Cruise print is only available in **selected styles**



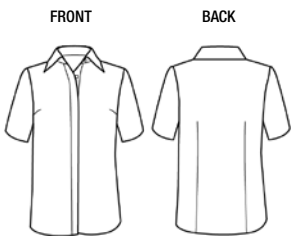
ALIDA



ADELINE



ODETTE



Approx. 72cm centre back

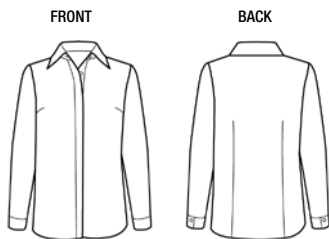
RELAXED

BB91 ALIDA - Blouse

Short sleeve over blouse with concealed button stand

SIZES 30 - 54

AVAILABLE IN: See swatches below



Approx. 72cm centre back

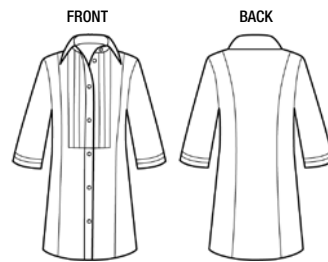
RELAXED

BB92 ADELINE - Blouse

Long sleeve over blouse with concealed button stand

SIZES 30 - 54

AVAILABLE IN: See swatches below



Approx. 78cm centre back

RELAXED

BB101 ODETTE - Blouse

Longer length blouse with front tucks

SIZES 30 - 54

AVAILABLE IN: See swatches below

PEARL POLYESTER COLOURS AND PRINTS





HEIDI

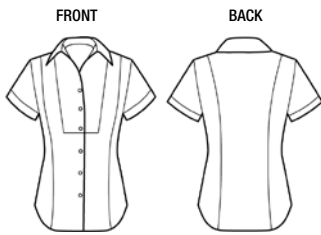


ABBY



ERIN

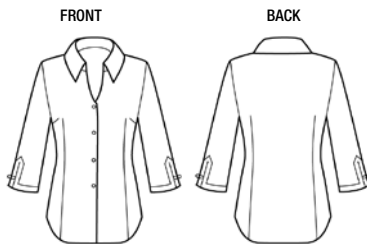
COTTON RICH SHIRTS STYLE INFORMATION



Approx. 60cm centre back

CLASSIC

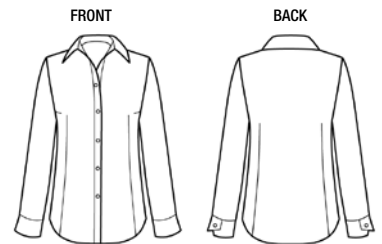
BB122 HEIDI - Shirt
 Short sleeved shirt with panels and yoke detail
 SIZES 28 - 48
AVAILABLE IN: See swatches right



Approx. 62cm centre back

CLASSIC

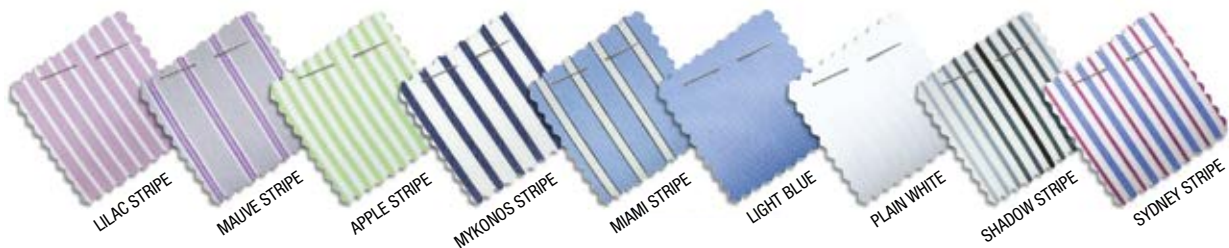
BB123 ABBY - Shirt
 3/4 Sleeve shirt with sleeve detail
 SIZES 30 - 54
AVAILABLE IN: See swatches below



Approx. 64cm centre back

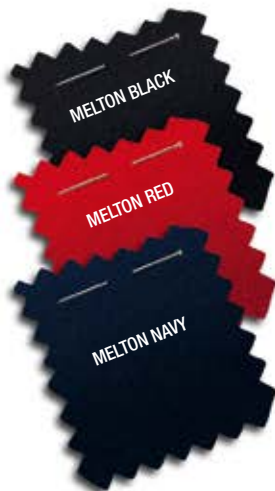
CLASSIC

BB124 ERIN - Shirt
 Long sleeve shirt with front darts
 SIZES 26 - 54
AVAILABLE IN: See swatches below





CHILL CHASERS



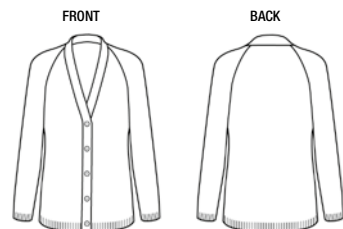
Approx. 92cm centre back

CLASSIC

CE13 LYNN - Coat
Classic coat, Pockets, Lined

COLOUR Black, Navy, Red
FABRIC Melton

SIZES S - XXL



Approx. 64cm centre back

FITTED

LJ13 ALYSSA - Cardigan
Long raglan sleeve with buttons

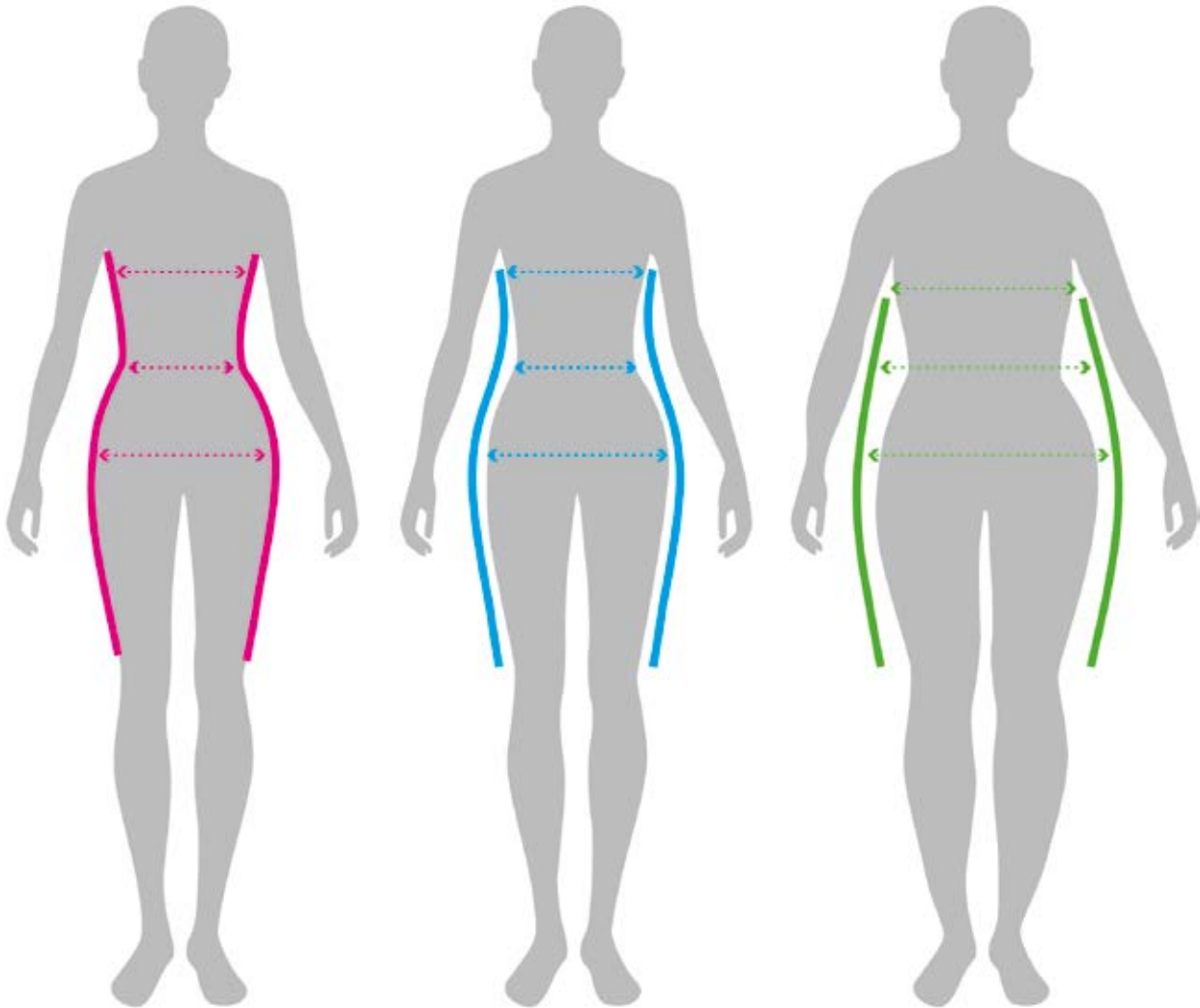
COLOUR Navy, Charcoal
FABRIC 50% Merino Wool / 50% Acrylic

SIZES XS - XXL

FIND YOUR PERFECT FIT

To make it easier to select flattering items for all shapes, we have classified our styles into the following categories:

Fitted, **Classic** or **Relaxed**.



Fitted

This style is shaped to the contours of the body and is particularly fitted.

Classic

The Classic fit has a tailored shape which sits lightly on the body, giving shape without being too fitted. This fit is suitable to most body types.

Relaxed Fit

The Relaxed fit allows the body more movement and is more suitable for the fuller figure.

PLEASE NOTE:

We do not recommend that an individual takes both a 'fitted' and a 'relaxed fit' garment in the same order as one might be considered too small or too big.

MEASURE UP FOR A GREAT FIT

Step 1:

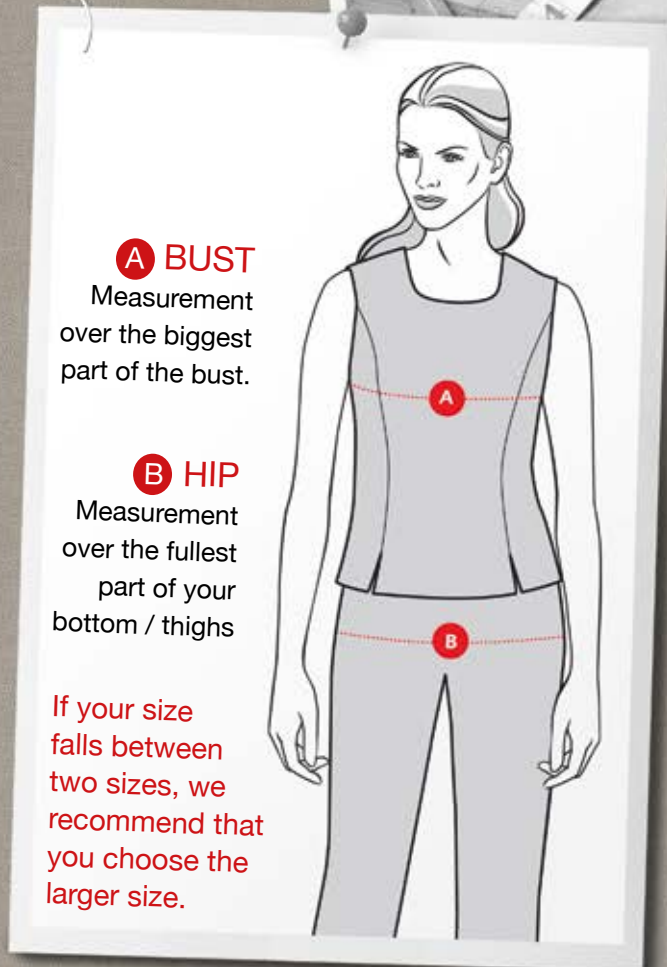
Don't guess your size, ask a friend to measure you with a tape measure.

Step 2:

Take your measurements while standing in a natural position.

Step 3:

Compare your measurements with the chart below.



SIZE CHART

GARMENT SIZE	26	28	30	32	34	36	38	40	42	44	46	48	PLUS SIZES		
	2	4	6	8	10	12	14	16	18	20	22	24	26	28	30
BUST measurements in centimetres	75 - 77	78 - 80	81 - 84	85 - 88	89 - 93	94 - 98	99 - 103	104 - 109	110 - 115	116 - 121	122 - 127	128 - 133	134 - 139	140 - 145	146 - 151
HIP measurements in centimetres	80 - 83	84 - 87	88 - 91	92 - 95	96 - 100	101 - 105	106 - 110	111 - 116	117 - 122	123 - 128	129 - 134	135 - 140	141 - 146	147 - 152	153 - 158

Our Returns Policy

As we are sure you will be and want you to be, delighted with your purchase of Imagemakers Corporate Wear, you are welcome to exchange any item providing garments are still in their original state and packaging and have not been worn or altered in any way, shape or form.

Any garments returned without the original labelling on, will not be exchanged and the return cost of the garment to the customer will be for their account.

In order to exchange goods, contact Imagemakers at sales@imagemakers.co.za for an exchange reference number and form, which we will email to you. This form needs to be included, along with a copy of the original invoice in the box with the returned items. No items will be exchanged without a return reference number being quoted.

Returned items will not be exchanged if they are received by Imagemakers later than 30 days from the date we dispatched your order and if they are not accompanied with an Imagemakers return form, with return number included and a copy of the original invoice, as mentioned above.

Manufacturing fault return:

Any garment queries / faults which are due to a clear oversight on behalf of Imagemakers, will be exchanged and all costs will be for Imagemakers.

Size / Colour exchange return:

Shipping costs for sending back these items; will be for the customer's account. We strongly recommend that customers send any returns via an insured, traceable service. Imagemakers will cover the shipping costs for sending the replacement items to the customer.

Style Exchanges return:

Shipping costs for sending back these items, will be for the customer's account. We strongly recommend that customers send any returns via an insured, traceable service. If there are amounts owing due to price differences in a style exchanges, these amounts must be settled before your return parcel will be despatched.

PLEASE NOTE:

Imagemakers cannot accept responsibility for damage caused by mishandling, failure to follow garment care instructions, or excessive wear and tear. All garments are manufactured by Imagemakers, as a result, please note that commercially acceptable variations in colour may occur due to slight differences in fabric from different deliveries. Same styles manufactured in different quality fabrics can feel slightly different in fit, although the exact same pattern is used, electronically cut and garments manufactured at the same time. These differences should not warrant size exchanges.

Please contact sales@imagemakers.co.za with any return queries you may have.

Returns are to be forwarded to the following return address:

Imagemakers (Pty) Ltd
21 Queenspark Avenue
Salt River
7925



- Register on our website, you can place and track your orders online.
- We appreciate your order, please sign off our terms and conditions on pg 174 and fax it to us, with your order, to speed up the processing of your order,
- All garments are sold without accessories shown in the catalogue.

LADIES & MENS ORDER FORM

VAT NO. 4230113054 REG NO. 1982/009616/07

INVOICE TO: PLEASE USE BLOCK LETTERS		DATE:	YOUR CO REG NO:
COMPANY:		YOUR VAT REGISTRATION NO:	
DELIVERY ADDRESS:		DELIVERY METHOD: PLEASE TICK APPLICABLE BLOCK	
		<input type="checkbox"/> BY IMAGEMAKERS COURIER SERVICE - ADD DELIVERY CHARGE	
		<input type="checkbox"/> CUSTOMER WILL COLLECT - NO DELIVERY CHARGED	
		<input type="checkbox"/> BY CUSTOMERS COURIER - NO DELIVERY CHARGED	
PLACE:	POSTAL CODE:	COURIER NAME: TEL:	
NO ORDERS CAN BE PROCESSED WITHOUT YOUR OFFICIAL COMPANY ORDER NUMBER		ACCOUNT NO:	
YOUR COMPANY ORDER NUMBER:			
CORPORATE WEAR CO-ORDINATOR:		CO-ORDINATOR DIRECT TEL:	
BRANCH TEL: ()		CO-ORDINATOR FAX: ()	
BRANCH FAX: ()		CO-ORDINATOR EMAIL:	
BRANCH EMAIL:			

THIS ORDER IS FOR (INDIVIDUAL NAME):		INDIVIDUAL'S CELLPHONE NO.:
		INDIVIDUAL'S EMAIL:
INDIVIDUAL'S BUST MEASUREMENT cm:	INDIVIDUAL'S HIP MEASUREMENT cm:	KEEP ME UPDATED ON THE STATUS OF MY ORDER VIA SMS <input type="checkbox"/> EMAIL <input type="checkbox"/>

STYLE NO.	STYLE NAME	DESCRIPTION	COLOUR	SIZE	QTY	UNIT PRICE	DELIVERY	TOTAL

PAYMENT OPTIONS: DIRECT DEPOSIT

OR OR

Imagemakers Pty Ltd Acc. number: 908 929 6756 Branch code: 532005	Imagemakers Pty Ltd Acc. number: 071199101 Branch code: 051001	Imagemakers Pty Ltd Acc. number: 62337872396 Branch code: 250655
---	--	--

SUB TOTAL		
ADD VAT		
TOTAL		

I / We acknowledge the above and do hereby confirm this order in accordance with the terms and conditions of sale, on the reverse of this page being page 174 of the Imagemakers Ref. 18 catalogue. Thank you for your order.

THIS ORDER IS FOR (SIGNATURE)

COMPANY NAME:

CO-ORDINATOR NAME:

POSTAL ADDRESS:

CO. TEL:() CO. FAX: ()

COMPANY EMAIL:

DATE: VAT No.:

ACCOUNTS CONTACT:

ACCOUNTS POSTAL ADDRESS:

ACC. TEL: () ACC. FAX: ()

ACC. EMAIL:

TERMS AND CONDITIONS OF SALE FOR BUSINESS AND PRIVATE ORDERS

These terms and conditions of sale shall apply to all Orders placed by the Purchaser. The Purchaser acknowledges that these terms and conditions govern all orders placed by it at any time and from time and as such constitute a binding agreement between the Purchaser and Imagemakers (Pty) Ltd or its assigns (IMA) upon acceptance of an order by IMA.

DEFINITIONS

Order(s) the request made by the Purchaser or its agent to IMA for the sale and delivery of certain Corporate Wear garments to the Purchaser, the details of which are contained either on the reverse side hereof or on any document requesting the supply of such garments, including additional, supplementary, and repeat orders. Purchaser: the party placing an order with IMA or on whose behalf such order is placed and who is identified as such on the reverse side hereof. IMA Imagemakers (Pty) Limited, Reg. No. 1982/009616/07 of 21 Queenspark Avenue, Salt River Cape Town or its assigns.

AGREEMENT

This document contains the entire agreement between the parties relating to the Orders and no party shall be bound by any undertaking, representation, warranty, promise or the like not recorded herein. No amendment of this agreement will constitute a novation of any of the terms of this agreement unless reduced to writing and signed by the Purchaser and IMA. This agreement and all matters relating hereto shall be dealt with in accordance with the laws of South Africa.

PRICE

The prices reflected in the IMA Corporate Wear Price List, are exclusive of VAT and are applicable to all Orders, completed, signed and received by IMA on or before the validity date as reflected in the Price List. Notwithstanding the above provision, IMA may, in its sole discretion and without notice to the Purchaser, alter the prices and validity dated without incurring any obligation prior to acceptance of an Order. The prices exclude the costs of the delivery of the garments to the customers at its designated delivery address.

CREDIT INFORMATION

The Purchaser hereby consents to Imagemakers (Pty) Limited on its assigns or verifying any application for credit made by the Purchaser to Imagemakers (Pty) Limited or for any of the purposes contemplated by the National Credit Act, 34 of 2006 or the regulations made in terms of such Act.

PAYMENT

The Purchaser shall pay for the garments in full, before they are despatched from IMA, as agreed between IMA and the purchaser in respect of each specific order. Should the Purchaser fail to pay IMA for the garments, IMA may suspend the delivery of further orders until all sums which are due have been paid. Should the Purchaser cancel an Order, IMA may charge the Purchaser a cancellation fee not exceeding 50% of the Purchase Price. All overdue amounts due by the Purchaser to IMA in respect of unpaid Orders shall bear interest at the rate of 2% above the prime bank overdraft rate charged by ABSA Bank, from time to time, to its preferred customers, from due date until date of payment. The Purchaser shall not be entitled to attach any condition whatsoever to any payment made to IMA, including the condition that any payment is made and tendered in full and final settlement. If the Purchaser attaches any such condition, IMA will be entitled to accept payment on account and to exercise its rights in terms hereof as if no such condition had been attached.

OWNERSHIP AND DELIVERY

Ownership of the garments ordered by the Purchaser shall remain vested in IMA and shall not pass to the Purchaser until IMA receives payment for the garments in full. While IMA shall use its best endeavours to adhere to any specified delivery date, it shall not be bound by such date and accepts no responsibility for any loss, expense, or any other damages of whatsoever nature that may result from any delay in delivery.

RELEASE

All garments displayed in the IMA Corporate Wear catalogue are subject to availability. IMA shall be released from the obligation to deliver any particular items of the Order if, for any good reason, it is unable to supply and deliver same to the Purchaser. In such event, IMA shall not be liable for any loss of profit or damages, direct or indirect, consequential or otherwise that the Purchaser may suffer. Such release shall in no way affect or detract from the Purchaser's obligation to pay for the remainder of the items reflected in the Order that are supplied and delivered to the Purchaser.

RISK

Notwithstanding the reservations of ownership as set out above, all risk in and to the garments shall pass to the Purchaser upon delivery.

ALTERATIONS

The sizes and lengths of the garments, as more fully reflected and specified in the catalogue, constitute the only sizes and lengths that are manufactured as part of the IMA Corporate Wear Collection and accordingly, exceptions will not be made should such sizes or lengths not match the requirements of the Purchaser. Notwithstanding the above provision, should any particular garment be of an inappropriate size or length, IMA may agree to alternative arrangements that may meet the Purchaser's requirements. IMA shall have the right, without notice and from time to time, to withdraw, modify, or alter the styles, fabrics and colours of any of its styles without incurring any liability.

RETURNS

In as much as each garment is delivered with detailed care instructions attached to it, IMA shall not be responsible for any damage that may be caused to the garments due to incorrect laundering or general poor care.

BREACH

Should the Purchaser breach any of the terms of this agreement or fail to make payment on due date of any monies owing by it to IMA, IMA may, without prejudice to any other rights which it may have in law, cancel the agreement without any prior notice to the Purchaser and claim any damages it may have suffered as a result of such breach, or claim payment of all monies which are owing to it. The Purchaser will be liable for all expenses incurred by IMA in exercising any rights arising out of a breach of the Purchaser's obligation or failure to pay any monies due by it, including legal charges as between attorney and own client, collection charges and tracing fees.

WHOLE CAUSE OF ACTION

The parties agree that a valid agreement shall only be concluded once the order / signed agreement is received by IMA at its place of business, namely 21 Queenspark Avenue, Saltriver in the Cape Town Court's jurisdiction. The parties further agree that payment to IMA must be made into our bank account at either Standard Bank, Absa Bank or Nedbank, in South Africa and it shall only be deemed to be paid once payment is reflected in the bank account of IMA.

SIGNATORY

Should the signatory hereto be a representative of the Purchaser, the signatory warrants that he/she is the duly authorised signatory of the Purchaser and that he/she may bind the Purchaser. The signatory by his/her signature hereto hereby binds himself/herself as surety and co-principal debtor in solidum with the Purchaser to and in favour of IMA for payment of all sums of money which may at any time be owing by the Purchaser to IMA in terms of any Order and which sums shall include all interest and any other charges that the Purchaser is liable to pay to IMA.

FORCE MAJEURE

Should IMA be unable to perform any of its obligations as a result of forces beyond its control from any cause whatsoever, IMA shall be entitled, at its option, to cancel this agreement or to suspend performance of its obligations hereunder and shall not be liable for any loss or damage, consequential or otherwise resulting from such cancellation or suspension.

GENERAL

The Purchaser chooses as its domicilium citandi et executandi for all purposes hereunder, the physical address given by the Purchaser on any Order form. The Purchaser consents and submits to the jurisdiction of the Magistrates Court in respect of all actions or proceedings arising out of this agreement, notwithstanding that the amount of such claim may exceed the jurisdiction of such court. IMA shall however not be precluded from instituting any action against the Purchaser in the High Court of South Africa. IMA will be entitled to verify the information contained in the Order and generally to make whatever enquiries it deems necessary. A certificate signed by any manager of IMA (whose appointment need not be proved) as to the amount due and payable by the Purchaser to IMA in respect of capital, interest and/or any other amount, and as to any details of any purchase or Order, will be prima facie proof of the correctness of the contents thereof and shall be sufficient for the purposes of enabling IMA to obtain summary judgment or provisional sentence against the Purchaser or the signatory. No amendment, variation, addition, alteration or consensual cancellation of an Order or any term of this agreement by the Purchaser shall be of any force of effect unless recorded in writing and signed and agreed to by IMA. No Waiver of any of the terms and conditions of this agreement will be binding, for any purpose, unless reduced to writing and signed by such party. Any such Waiver will only relate to that specific Waiver and be for no other purpose.

I / WE ACKNOWLEDGE THE ABOVE AND DO HEREBY CONFIRM OUR ORDER IN ACCORDANCE WITH SUCH CONDITIONS.

.....
CO-ORDINATOR SIGNATURE

.....
(DIRECTOR/MEMBER WHO WARRENTS THAT HE IS DULY AUTHORIZED THERETO) SIGNATURE

TERMS & CONDITIONS SIMPLIFIED

Company Orders & Private Orders

- Orders placed officially on behalf of a company, must be accompanied by an official company order number and will be accepted by Imagemakers in accordance with our terms and conditions found on page 174.
- Orders placed on behalf of individuals in their capacity must be accompanied by full payment.
- You can order any combination of sizes, styles and colours, provided they are listed in the current catalogue. However, there is a minimum quantity of 3 garments per order.
- Terms and conditions of sale for business and private orders apply, as per Catalogue Ref.18 and subsequent brochures.

Price list

- All prices are quoted: exclusive of VAT. Prices and styles are as per current price list.
- All prices are quoted: excluding postage / packaging.
- Styles are only available in sizes as stated in the style reference pages inside the catalogue.
- Prices may change prior to confirmation of order, as they are based on current fabric costs and are subject to fluctuating exchange rates, Imagemakers will advise.

Payment Terms

For South African based companies:

After manufacturing, full payment is to be made before Imagemakers can despatch your order.

For orders over a certain value, a 50% deposit is payable on placing the order, and 50% is payable after manufacturing, before Imagemakers can despatch your order. Please refer to our price list for order values requiring deposits.

For NON South African based companies:

50% deposit is payable on placing the order, and 50% is payable after manufacturing, before Imagemakers can despatch your order.

Delivery

Delivery can be expected in 8+ weeks of the date of order confirmation, unless otherwise advised. Imagemakers cannot, however, be held responsible for delivery delays brought about by unforeseen circumstances beyond our control. For example: Delays in fabric delivery, strikes, etc. Customers shall not be entitled to cancel such order on the basis of late delivery.

- The delivery charge per garment must be included for postage/packaging. Refer to Price List for delivery charges.
- Orders are delivered by courier service, post or other. (This applies for South Africa only.)
- Should you confirm in writing that you make your own arrangements, for collection of the goods at our premises, no postage will be charged.
- NOTE: There is a minimum delivery charge per order, refer to price list.

Continuity

We are committed to ensure that the styles, fabrics and colours presented in this catalogue will continue to be available as shown. However, as we continuously develop and update our ranges, we do reserve the right to withdraw / replace existing fabrics, styles, colours and designs. All garments are made to order. As a result, please note that variations in colour may occur due to differences in fabric batches from different deliveries.

Garment Care

Provided that you follow the garment care instructions on the label inside each Imagemakers garment, and purchase sufficient garments to avoid excess wear of any one piece, your Imagemakers wardrobe should provide lasting satisfaction. We cannot accept responsibility for damage caused by mishandling or failure to follow garment care instructions provided.

[See specific garment care instructions for each fabric type on page 148](#)

Alterations

Our garments are manufactured to international size standards. Please ensure that you measure yourself properly and order the correct sizes from your measurements. We do not make garments to individual measurements and therefore cannot carry out any alterations.

Our Guarantee

Should there be a factory fault, the goods must be returned to us within 21 days. We will assess the claim and if it is found to be valid, the item will be repaired or replaced as soon as possible, free of charge. Please see our exchange policy on our website www.imagemakers.co.za

Important Notice: We reserve the right to accept or decline any specific order submitted against this catalogue. Circumstances in or beyond our control may result in the withdrawal or substitution of any colour, fabric, style or size. Although we do try to reproduce colours in this catalogue as accurately as possible, variations can occur due to printing.